

### High-Speed Programmable Universal Centrifuges

Accommodate large variety of tubes, bottles, and plates at speeds up to 17,000 rpm

- Microprocessor-based control panel— simply dial in run parameters and monitor them on the digital display
- Ten levels of braking intensity accommodate a variety of sample protocols
- Diagnostic software indicates an error code on the display when it detects a problem within the centrifuge

Set and display speed in either rpm or RCF. Brushless induction drive motors are maintenance-free and quiet even at high speeds. Radius correction feature allows g-value calculation with compensation for different tube sizes. Automatic rotor recognition ensures that maximum speed and acceleration/deceleration ratings are not exceeded. Automatic imbalance detection system prevents damage by gently bringing rotor to a stop. Store parameters for up to ten runs.

#### A Universal Centrifuge

Computer designed airflow pattern prevents significant temperature rise within the chamber.

#### B Refrigerated Universal Centrifuge

Microprocessor controls temperature in 1° increments from -10 to 40°C.

This refrigerated centrifuge offers the same features as the universal centrifuge described in "A" above. It also includes a CFC-free refrigeration system with "precool" function.

#### C Large-Capacity Refrigerated Universal Centrifuge

Includes 1000-mL capacity (four x 250-mL) buckets. Microprocessor controls temperature in 1° increments from -10 to 40°C (14 to 104°F).



Centrifuge 17304-61 shown with rotor 17305-60



Centrifuge 17303-10 shown with rotor 17303-80

#### Specifications

Rotor: order separately below

Temperature range: -10 to 40°C (refrigerated models)

Key letter	Catalog number	Description	Speed range	Max capacity	Timer	Power		Price
						VAC	Hz	
A	SN-17304-61	Universal centrifuge	500 to 17,000 rpm in 10- and 500-rpm increments	400 mL	1 to 60 minutes	120	50/60	
	220					50/60		
B	SN-17304-10	Universal refrigerated centrifuge		400 mL		120	50/60	
	220					50/60		
C	SN-17303-10	Universal refrigerated centrifuge		2000 mL		115	60	
	230					50		

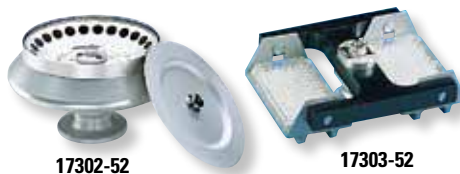
#### Rotors

Catalog number	Type	Capacity	Max RCF	Max RPM	Price
For A, B, and C					
SN-17302-52	Fixed-angle	24 x 1.5- to 2.0-mL	26,810 x g	17,000	
SN-17303-52	Microwell plate	Six 96-well microwell plates (includes swing-out plate carriers)	2354 x g	4500	
For A and B (17304-series centrifuges)					
SN-17305-60	Fixed-angle	12 x 15-mL (conical or round)	4306 x g	6000	
SN-17304-51		24 x 15-mL	2000 x g	3500	
SN-17302-54		6 x 50-mL	3960 x g	6000	
SN-17305-52	Swing-out	Four 100-mL round buckets (order inserts on bottom of page 283)	3910 x g	5000	
For C (17303-series centrifuges)					
SN-17304-49	Fixed-angle	24 x 15-mL with shield	2000 x g	3500	
SN-17303-80	Swing-out	Four 250-mL carriers (order separately below)	3803 x g	4500	

#### Carriers (for Rotor 17303-80)

Swing-out rotor requires two sets of carriers.

Cat. no.	Capacity	Max tube dim (mm)	Price
SN-17303-82	19 x 5-mL or 7 mL tubes	75 L x 12 dia	
SN-17303-84	12 x 15-mL conical tubes	100 L x 17 dia	
SN-17303-86	7 x 50-mL conical tubes	120 L x 17 dia	
SN-17303-88	1 x 250-mL tubes	116 L x 29 dia	
SN-17303-70	1 x 500-mL tubes	80 x 125	
SN-17303-72	1x deep well or 3x standard microplates	—	



17302-52

17303-52



17302-54

17304-49



Swing-out rotor 17305-52. Order inserts on bottom of page 206.



Swing-out rotor 17303-80 shown with carriers 17303-72 and 17303-86